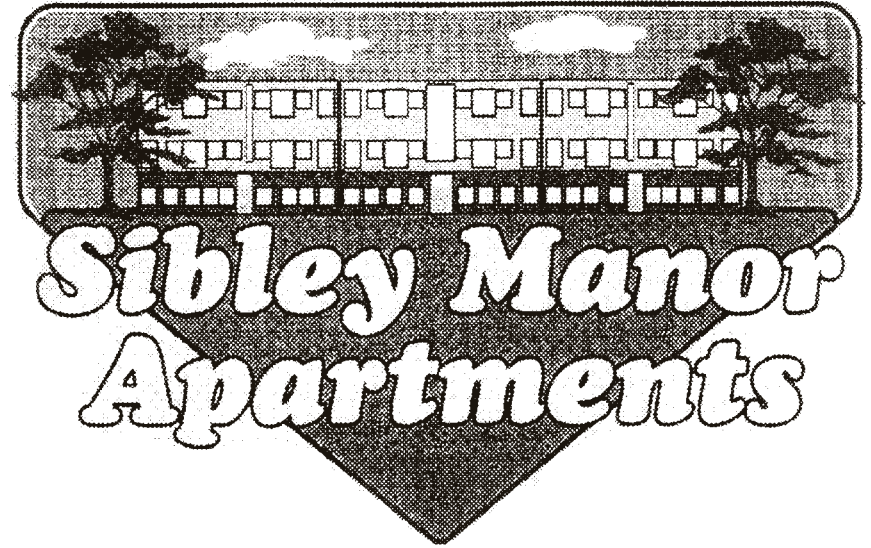


A CARING APARTMENT COMMUNITY



Sibley Manor Apartments

ON-SITE SERVICES AVAILABLE TO RESIDENTS:

- NEIGHBORHOOD HOUSE FOOD SHELF
- ETHIO MARKET
- ETHIO TAX & TRAVEL
- FAMILY CHILD CARE

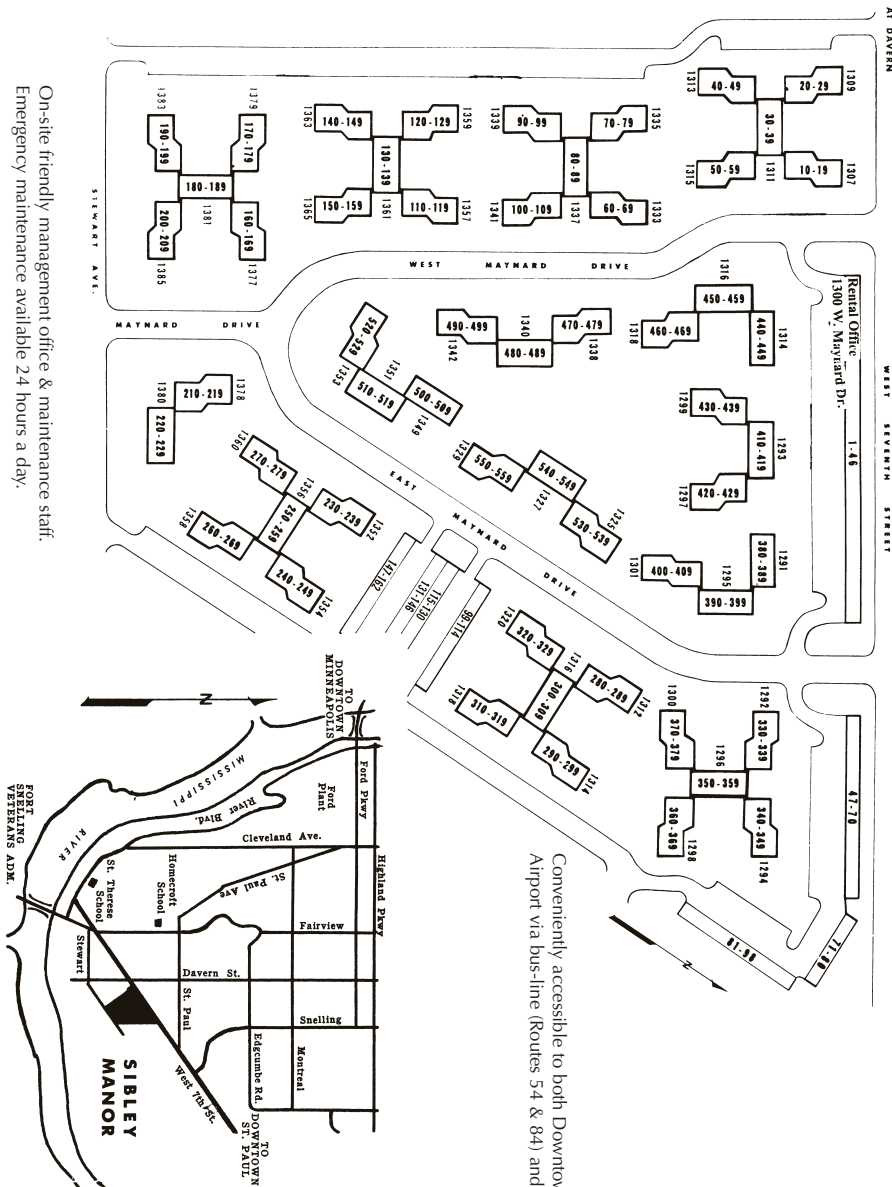
Sibley Manor is located on quiet, winding streets and well landscaped grounds with a large playground. We are convenient to churches, schools, shopping, freeways and nature trails (Crosby Park & Hidden Falls Park). Also, we are on a bus line to the Airport and the Mall of America.

1300 WEST MAYNARD DRIVE • ST. PAUL, MN 55116

Phone: 651-698-3819

Fax: 651-699-4873 • Email: SibleyManor@yahoo.com

<http://www.sibleymanor.com>



Conveniently accessible to both Downtowns, MOA & the Airport via bus-line (Routes 54 & 84) and Light-Rail.

On-site friendly management office & maintenance staff.
Emergency maintenance available 24 hours a day.

AIRPORT

Sibley MANOR APARTMENTS

Typical Floor Plans
Scale 1/4" = 1' Dimensions Approximate

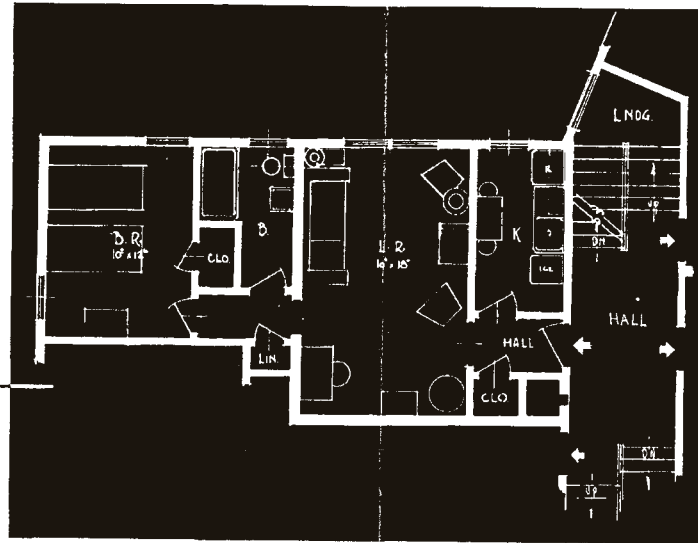
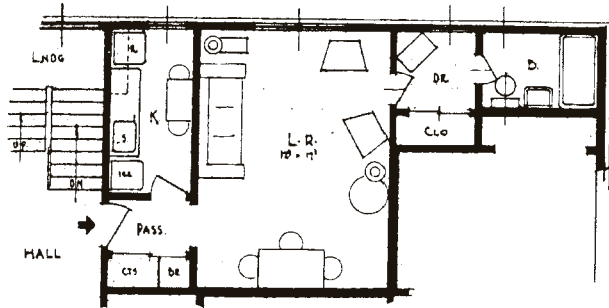
RENTAL RATES		SECURITY DEPOSITS
Studio	\$585	\$500
1 Bedroom	\$640 - \$665	\$500
2 Bedroom	\$725 - \$765	\$500
3 Bedroom	\$885	\$500

12 MONTH LEASES

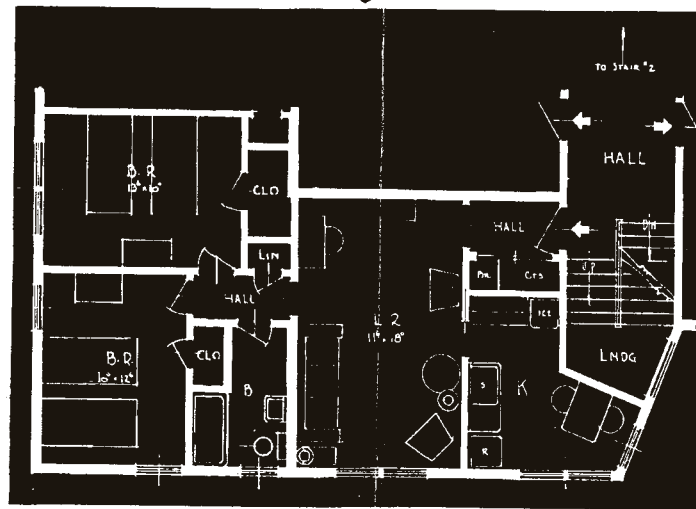
(month-to-month after lease is finished)

RENT INCLUDES: HEAT, WATER, & TRASH REMOVAL

Each building has 10 apartments, laundry facility and a storage room. Garden level apartments have tile floors, while the upper two levels have beautiful hardwood floors. Duplexes (\$825-\$875) and Townhouses (\$1200) are available from time to time.



ONE BEDROOM • A BUILDING
TWO BEDROOM • A BUILDING



EFFICIENCY APT. • B BUILDING

TWO BEDROOM • B BUILDING

ONE BEDROOM • B BUILDING

