

*a community of fine
apartments featuring the most
modern conveniences*



Sibley MANOR

SAINT PAUL, MINNESOTA



SIBLEY MANOR OFFERS BRIGHT NEW APARTMENTS WITH THESE DELUXE FEATURES

- Individual Heat Controls
- Modern Baseboard Radiation
- Tile Shower in Bath
- Soundproofing Between Apartments
- Individual Garbage Disposal Units
- Automatic Washers and Dryers
- Youngstown Metal Kitchens
- Frigidaire Ranges and Refrigerators

SIBLEY MANOR INC.
OWNERS

WEST SEVENTH STREET AT
WEST MAYNARD DRIVE
SAINT PAUL 16, MINNESOTA
PHONE MI-8-3818



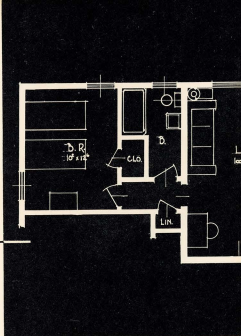
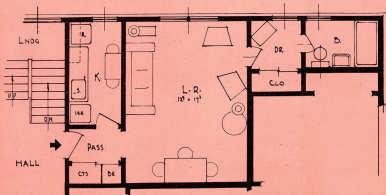
Sibley MANOR APARTMENTS

Typical Floor Plans

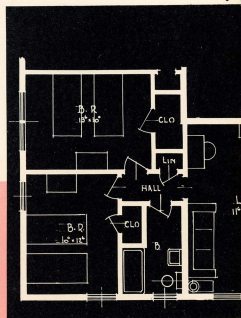
Scale $\frac{1}{4}" = 1'$ Dimensions Approximate

ONE BEDROOM TWO BEDROOM and EFFICIENCY UNITS

This privately owned village of apartment homes offers these well planned living units with ample closet space and superbly arranged modern kitchens. Sibley Manor's scenic location is convenient to churches, schools, transportation and proposed shopping facilities. The quiet winding streets amid well landscaped grounds with garages available on the site provide the perfect plan for modern living.

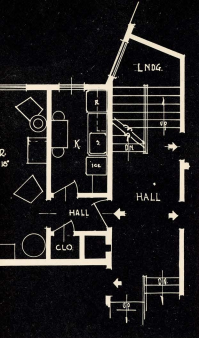


ONE BEDROOM TWO BEDROOM



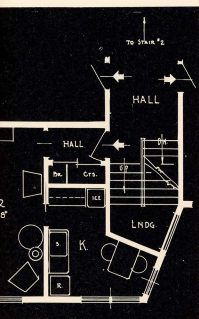
EFFICIENCY APT.

TWO BEDROOM



A BUILDING

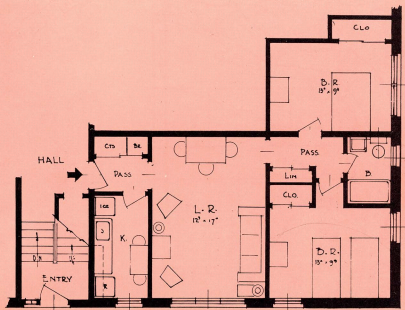
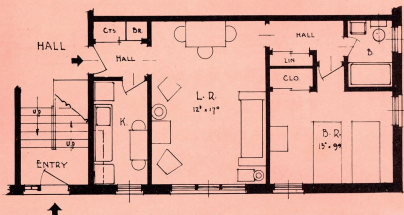
A BUILDING

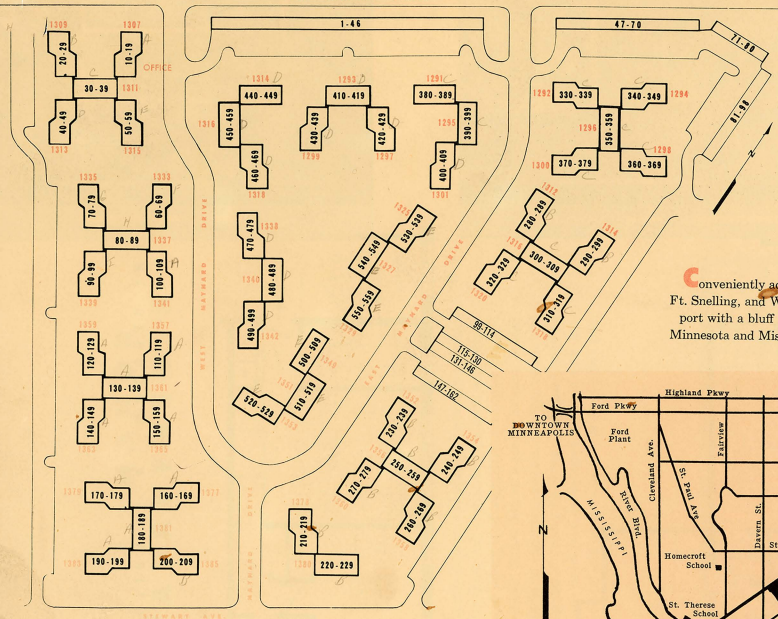


• B BUILDING

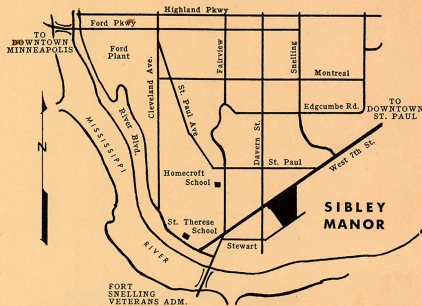
B BUILDING

ONE BEDROOM • B BUILDING





Conveniently accessible to both cities, Ft. Snelling, and Wold Chamberlain Airport with a bluff view commanding the Minnesota and Mississippi River valleys.



Careful architectural planning insures a maximum of space and light for your comfort and good health.